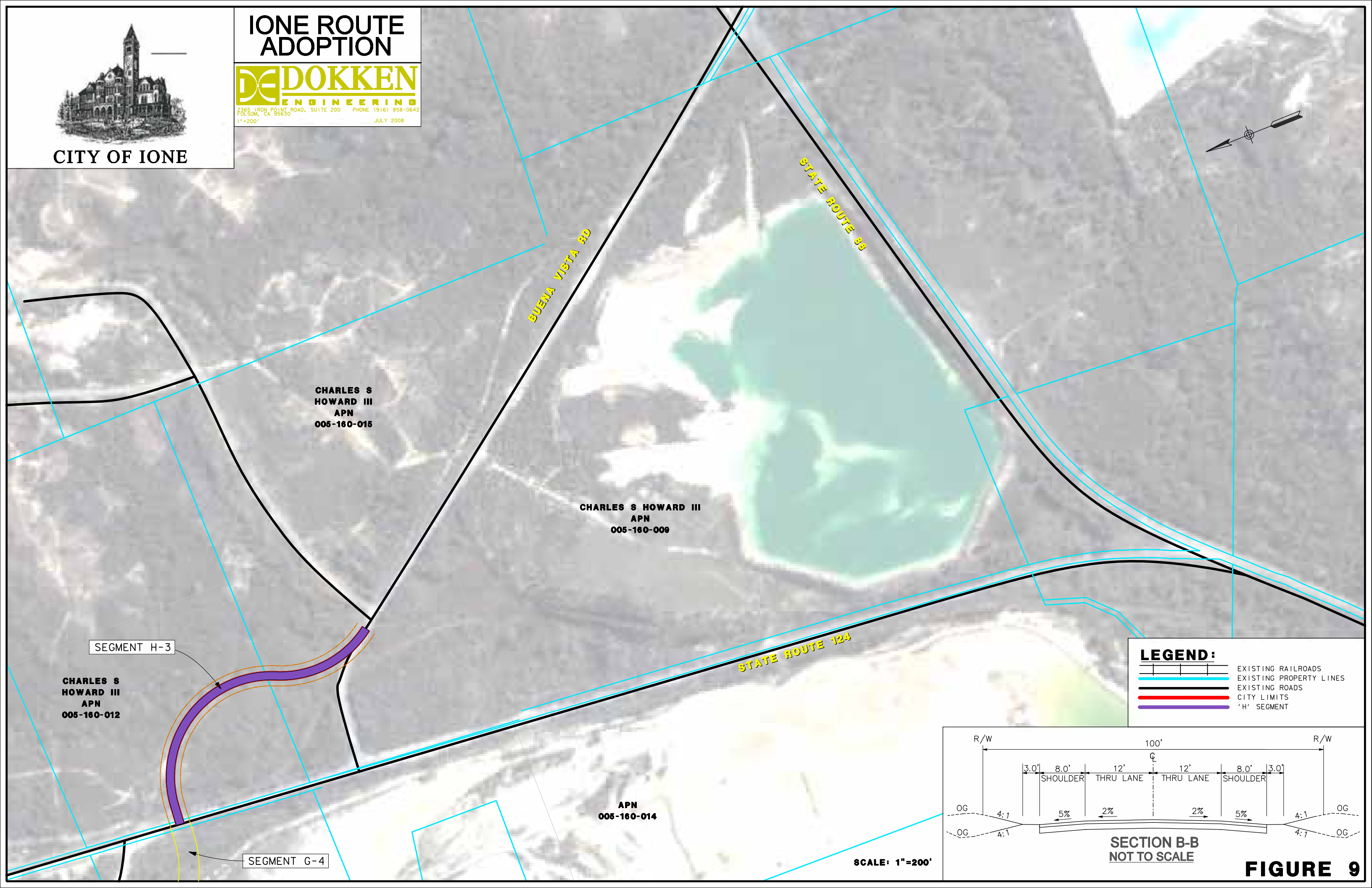




CITY OF IONE

IONE ROUTE ADOPTION

DE DOKKEN
ENGINEERING
 2365 IRON POINT ROAD, SUITE 200 PHONE (916) 858-0642
 FOLSOM, CA 95630
 1"=200' JULY 2008



CHARLES S
 HOWARD III
 APN
 005-160-015

CHARLES S HOWARD III
 APN
 005-160-009

CHARLES S
 HOWARD III
 APN
 005-160-012

APN
 005-160-014

BUENA VISTA RD

STATE ROUTE 88

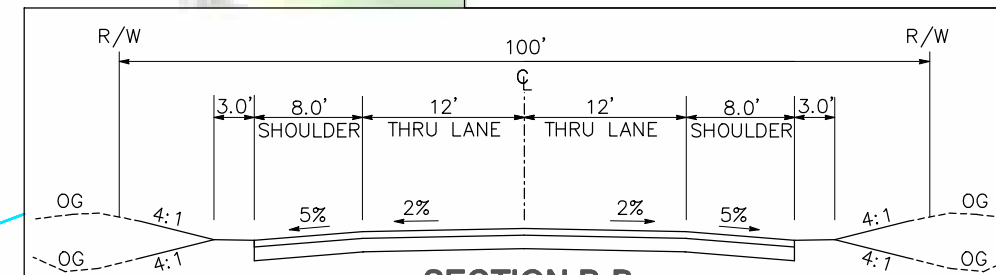
STATE ROUTE 124

SEGMENT H-3

SEGMENT G-4

LEGEND:

- EXISTING RAILROADS
- EXISTING PROPERTY LINES
- EXISTING ROADS
- CITY LIMITS
- 'H' SEGMENT



SCALE: 1"=200'

SECTION B-B
 NOT TO SCALE

FIGURE 9