

# 3: REVISIONS AND ERRATA

## 3.1 Introduction

---

This section summarizes text revisions and errata to the Draft EIR. Revisions reflect changes identified in the preparation of the responses to comments on the Draft EIR. Global changes are changes that apply throughout the Draft EIR.

Specific changes are listed in page order with reference to the relevant sections and pages in the Draft EIR. Text added to the EIR is underlined; and deleted text is ~~stricken~~.

Some changes to the project description and environmental analysis were made in response to public comments. Revisions include clarifications to mitigation measures and some changes in the project description of permits needed. Neither the comments received nor the responses to those comments introduce significant new information that was not addressed or evaluated in the Draft EIR. No substantial revisions that would merit recirculation of the Draft EIR, as defined by 15073.5(b) of Title 14 of CEQA, were made to the project or analyses after public comment.

## 3.2 Global Text Edits

---

The following global changes are made throughout the Final EIR:

- The Draft EIR discusses the options of either partially filling or partially lining Ponds 5 and 6. The option for partial lining has now been eliminated, and all references to the option of partially lining Ponds 5 and 6 are now deleted.
- The Draft EIR discusses both chemical disinfection and ultraviolet radiation disinfection as disinfection options for the new tertiary treatment facility. Wherever chemical disinfection is discussed as an option for a new tertiary treatment plant, that language is now stricken, and the only option carried forward in the Final EIR is ultraviolet radiation disinfection.
- The Draft EIR mentions a draft General Plan Update for the City of Lone. This General Plan Update was approved on August 25, 2009, and so is no longer a draft document. All references to a draft General Plan Update or a draft 2009 General Plan are now revised to delete the word “draft”. In addition, references to the 1989 General Plan, the 1989 General Plan Land Use Element, the 2003 General Plan Circulation Element, and

the 2005 General Plan Housing Element are now updated and replaced throughout the text and in Chapter 7: References with the 2009 General Plan.

### 3.3 Specific Text Edits

#### 3.3.1 TEXT EDITS

##### Executive Summary

*Page ES-7*

The following discussion is added between the discussions of aesthetics and traffic and transportation:

**Land Use, Planning, and Recreation**

Construction activities for the project level elements have the potential to cause a significant impact to nearby recreation activities by temporarily increasing noise, air pollutants, and traffic in the project area. Construction activities that produce noise or impact air quality or traffic in the project vicinity may interrupt regional recreational events occurring at Charles Howard Park or the Castle Oaks Golf Club. Implementation of the mitigation measures defined in Section 3.10: Noise, Section 3.7: Transportation and Traffic, and Section 3.4: Air Quality would reduce impacts on recreational activities to a less than significant level.

*Page ES-14 (Table ES.2-1)*

|                                                                                                                                                                                                                                                                                                                                                                                                                                                       |           |                                                                                                                                                                                                                                                                                                                                                                                                                                                                                                                                                                                                                                                                                                                                                                                                                                                                                                                                                                                                                                                                                                                                                                                                                                                                                                                                                                                                                                                                                                                                                                                                                                                                                                                                                                                                                                       |            |
|-------------------------------------------------------------------------------------------------------------------------------------------------------------------------------------------------------------------------------------------------------------------------------------------------------------------------------------------------------------------------------------------------------------------------------------------------------|-----------|---------------------------------------------------------------------------------------------------------------------------------------------------------------------------------------------------------------------------------------------------------------------------------------------------------------------------------------------------------------------------------------------------------------------------------------------------------------------------------------------------------------------------------------------------------------------------------------------------------------------------------------------------------------------------------------------------------------------------------------------------------------------------------------------------------------------------------------------------------------------------------------------------------------------------------------------------------------------------------------------------------------------------------------------------------------------------------------------------------------------------------------------------------------------------------------------------------------------------------------------------------------------------------------------------------------------------------------------------------------------------------------------------------------------------------------------------------------------------------------------------------------------------------------------------------------------------------------------------------------------------------------------------------------------------------------------------------------------------------------------------------------------------------------------------------------------------------------|------------|
| <p><b>Potential Impact 3.1-2:</b><br/>The potential to substantially deplete groundwater supplies or interfere substantially with groundwater recharge such that there would be a net deficit in aquifer volume or a lowering of the local groundwater table level (e.g., the production rate of pre-existing nearby wells would drop to a level which would not support existing land uses or planned uses for which permits have been granted).</p> | <p>PS</p> | <p><b>Mitigation Measure Hydrology-5:</b> The banks of all disposal ponds including Pond 8 shall be designed to withstand the boils and other near-pond surfacing similar to that experienced after the initial construction of Pond 7.</p> <p><b>Mitigation Measure Hydrology-6:</b> Following construction of Pond 8, more frequent monitoring of the wells that have already been installed may be required to demonstrate effective removal of compounds of concern, potentially with an expanded suite of constituents. To address this need, monitoring wells near Pond 8 and east and south of Pond 7 (wells P1, MW-5A, -5B, -4A, -4, and -6) shall be monitored monthly for static water levels, and for (a) bacteria, (b) nitrate and ammonia, (c) dissolved iron and manganese, (d) redox potential, (e) specific conductance, (f) sodium, and (g) chloride. While Pond 8 is in use and for six months thereafter, water levels and specific conductance shall be monitored quarterly in offsite wells 08-1, 08-2b, 08-3, 08-4a and 08-4b to assess effects of Pond 8 on the direction of groundwater flow relative to the baseline developed in this report. If bacteria, ammonia, or nitrate-nitrogen levels in the off-site wells are found to approach or exceed the Maximum Contaminant Levels for domestic potable supply (CCR, Title 22), <u>as a result of operation of the wastewater treatment facilities</u>, then use of Pond 8 shall be discontinued and the treated effluent formerly percolated through Pond 8 shall be conveyed to other off-site locations or end users for disposal. <u>Prior to discontinuing use of Pond 8 in response to excess bacteria levels, a well disinfection plan will be implemented to confirm whether elevated bacteria is attributable to the wastewater treatment</u></p> | <p>LTS</p> |
|-------------------------------------------------------------------------------------------------------------------------------------------------------------------------------------------------------------------------------------------------------------------------------------------------------------------------------------------------------------------------------------------------------------------------------------------------------|-----------|---------------------------------------------------------------------------------------------------------------------------------------------------------------------------------------------------------------------------------------------------------------------------------------------------------------------------------------------------------------------------------------------------------------------------------------------------------------------------------------------------------------------------------------------------------------------------------------------------------------------------------------------------------------------------------------------------------------------------------------------------------------------------------------------------------------------------------------------------------------------------------------------------------------------------------------------------------------------------------------------------------------------------------------------------------------------------------------------------------------------------------------------------------------------------------------------------------------------------------------------------------------------------------------------------------------------------------------------------------------------------------------------------------------------------------------------------------------------------------------------------------------------------------------------------------------------------------------------------------------------------------------------------------------------------------------------------------------------------------------------------------------------------------------------------------------------------------------|------------|

|  |                                                                                                                                                                                                                                                                                                                                                                                                                                                                                                                                                                                                                                                                                                                                                                                                                                                                                                                                                                                                                                                                                                                                                                                                                                                                                                                                                                                                                                                                                                                                                                                                                                                                                                                                                                                                                                                                                                                                                                                                                                                                                                                                                                                                                                                                                                |  |
|--|------------------------------------------------------------------------------------------------------------------------------------------------------------------------------------------------------------------------------------------------------------------------------------------------------------------------------------------------------------------------------------------------------------------------------------------------------------------------------------------------------------------------------------------------------------------------------------------------------------------------------------------------------------------------------------------------------------------------------------------------------------------------------------------------------------------------------------------------------------------------------------------------------------------------------------------------------------------------------------------------------------------------------------------------------------------------------------------------------------------------------------------------------------------------------------------------------------------------------------------------------------------------------------------------------------------------------------------------------------------------------------------------------------------------------------------------------------------------------------------------------------------------------------------------------------------------------------------------------------------------------------------------------------------------------------------------------------------------------------------------------------------------------------------------------------------------------------------------------------------------------------------------------------------------------------------------------------------------------------------------------------------------------------------------------------------------------------------------------------------------------------------------------------------------------------------------------------------------------------------------------------------------------------------------|--|
|  | <p><u>facility operations.</u></p> <p><b>Mitigation Measure Hydrology-7:</b> Following construction of Pond 8, one or both of the following mitigation measures shall be implemented:</p> <p>Option A: False-color infrared photography at a scale of 1:15,000 or more detailed<sup>1</sup> shall be flown of the greater project area to document the extent of ponding and soil saturation in areas to the south and west of the City's WWTP facilities. Infrared photography shall be flown annually in early May or approximately 20 days following a late (or the last) rainfall of the season exceeding 0.5 inches for the week. Results shall be compared by a qualified hydrologist with similar photographs from prior to Pond 8 construction. A memorandum shall be prepared each post-project year outlining areas with more or less moisture than before the additional pond was built, and recommending measures, such as conveyance of the treated effluent formerly percolated through Pond 8 to other off-site locations or end users, to mitigate significant changes. After five years, the photography program should be reassessed and may be discontinued.</p> <p>Option B: The off-site wells installed in January 2009 (MW 08-01, MW 08-2A, MW-08-2B, MW 08-3) shall be monitored quarterly to document changes in water levels south of the City WWTP facility potentially related to effects of effluent disposal. Specific conductance shall be measured in the field on each monitoring visit and water samples shall be collected using conventional sampling protocols and submitted to a state-certified laboratory for analysis of total dissolved solids (TDS), nitrate- and ammonia-nitrogen, sodium and chloride concentrations. A qualified hydrologist shall prepare an annual report or memorandum relating the monitoring results to the source(s) of groundwater, including effluent disposal at the City WWTP, and measures to mitigate significant changes in groundwater levels from conditions before Pond 8 was constructed shall be recommended, if appropriate. After five years, the monitoring program shall be reassessed and may be discontinued if data has shown that Pond 8 has a less than significant effect on groundwater levels.</p> |  |
|--|------------------------------------------------------------------------------------------------------------------------------------------------------------------------------------------------------------------------------------------------------------------------------------------------------------------------------------------------------------------------------------------------------------------------------------------------------------------------------------------------------------------------------------------------------------------------------------------------------------------------------------------------------------------------------------------------------------------------------------------------------------------------------------------------------------------------------------------------------------------------------------------------------------------------------------------------------------------------------------------------------------------------------------------------------------------------------------------------------------------------------------------------------------------------------------------------------------------------------------------------------------------------------------------------------------------------------------------------------------------------------------------------------------------------------------------------------------------------------------------------------------------------------------------------------------------------------------------------------------------------------------------------------------------------------------------------------------------------------------------------------------------------------------------------------------------------------------------------------------------------------------------------------------------------------------------------------------------------------------------------------------------------------------------------------------------------------------------------------------------------------------------------------------------------------------------------------------------------------------------------------------------------------------------------|--|

Page ES-22 (Table ES.2-1)

Add the following row to Table ES.2-1:

|                                                                                                                 |     |     |     |
|-----------------------------------------------------------------------------------------------------------------|-----|-----|-----|
| <b>Potential Impact 3.4-5:</b> Potential to create objectionable odors affecting a substantial number of people | LTS | N/A | N/A |
|-----------------------------------------------------------------------------------------------------------------|-----|-----|-----|

<sup>1</sup> A 1:6,000 scale is usually ideal for analyzing grassland hydrologic issues.

## Chapter 1: Introduction

### *Page 1-1*

The City of Lone is proposing to expand the City's wastewater treatment and disposal capacity to accommodate near term and future planned growth. The project is also intended to address and comply with a Cease and Desist Order from the Regional Water Quality Control Board (RWQCB). The project has been designed to meet the RWQCB's goals of regionalization, reclamation, recycling and conservation for wastewater treatment plants (RWQCB Resolution No. R5-2009-0028). The majority of the project area...

## Chapter 2: Project Description

### *Page 2-2*

The Master Plan provides for tertiary level treatment of all effluent prior to disposal, which facilitates reclamation and recycling of treated wastewater, and ensures safe and reliable wastewater treatment for the community.

### *Page 2-2*

The City of Lone currently operates two wastewater treatment and disposal facilities, both of which currently provide regional wastewater services.

### *Page 2-8*

Part I – Treatment – This part of the project includes expansion of the City's secondary and tertiary treatment facilities to provide more treatment capacity to the City, allowing the City to continue operating a regional wastewater treatment facility and providing greater opportunity for reclamation and recycling of treated wastewater...

### *Page 2-8*

Part II – Disposal – This part involves the disposal of the City's treated wastewater. ... In order to address future treated wastewater disposal needs, the City of Lone has identified three possible future disposal options, including options for additional reclamation and recycling of treated wastewater, that could be pursued in a second phase of Part II.

### *Page 2-20*

**Tertiary Treatment Facilities.** Tertiary treatment facilities would only be an available option if the City chooses to construct the underground and enclosed activated sludge treatment plant design. In this design, after the wastewater has received biological treatment and has been treated to a secondary level, this secondary effluent would be further processed through a tertiary treatment system consisting of filtration and disinfection. A filter system would reduce the wastewater turbidity, and a subsequent disinfection system would provide ~~chemical and/or~~ ultraviolet radiation (UV) disinfection. The resulting tertiary treated effluent would meet all California Title 22 – 2.2 reuse requirements.

### *Page 2-27*

Tables 2.4-2 and 2.4-3 show the current pond capacity and the proposed pond capacity after the closure of Ponds 1-4 and the construction of Pond 8. Table 2.4-4 shows the percolation pond disposal network capacity after the completion of the Part I project elements, and after the addition of a new Pond 8.

Page 2-29

**Table 2.4-2: Current Pond Capacity**

|                              | <u>Units</u> | <u>Pond 1</u> | <u>Pond 2</u> | <u>Pond 3</u> | <u>Pond 4</u> | <u>Pond 5</u> | <u>Pond 6</u> | <u>Pond 7</u> | <u>Total</u> |
|------------------------------|--------------|---------------|---------------|---------------|---------------|---------------|---------------|---------------|--------------|
| <u>Maximum Water Surface</u> | <u>Acres</u> | <u>1.7</u>    | <u>1.5</u>    | <u>1.1</u>    | <u>2.2</u>    | <u>4.9</u>    | <u>4.2</u>    | <u>5.3</u>    | <u>20.9</u>  |
| <u>Storage Volume</u>        | <u>MG</u>    | <u>3.0</u>    | <u>2.2</u>    | <u>1.6</u>    | <u>2.4</u>    | <u>17.2</u>   | <u>9.0</u>    | <u>12.3</u>   | <u>47.7</u>  |
| <u>Maximum Water Depth</u>   | <u>Feet</u>  | <u>8.0</u>    | <u>8.0</u>    | <u>8.0</u>    | <u>8.0</u>    | <u>14.0</u>   | <u>8.0</u>    | <u>8.0</u>    | -            |

**Table 2.4-3: Proposed Pond Capacity**

|                              | <u>Units</u> | <u>Mod Pond 5</u> | <u>Mod Pond 6</u> | <u>Pond 7</u> | <u>Pond 8</u> | <u>Total</u> |
|------------------------------|--------------|-------------------|-------------------|---------------|---------------|--------------|
| <u>Maximum Water Surface</u> | <u>Acres</u> | <u>3.3</u>        | <u>3.3</u>        | <u>5.3</u>    | <u>5.8</u>    | <u>17.7</u>  |
| <u>Storage Volume</u>        | <u>MG</u>    | <u>14.0</u>       | <u>7.5</u>        | <u>12.3</u>   | <u>13.3</u>   | <u>47.1</u>  |
| <u>Maximum Water Depth</u>   | <u>Feet</u>  | <u>12.0</u>       | <u>8.0</u>        | <u>8.0</u>    | <u>8.0</u>    |              |

**Table 2.4-42: Pond Disposal Capacities with the Addition of Pond 8**

|                             | <u>Units</u>            | <u>Ponds 5, 6, and 7</u> | <u>Ponds 5, 6, 7 and 8</u> |
|-----------------------------|-------------------------|--------------------------|----------------------------|
| Disposal Capacity (Annual ) | Million gallons per day | 0.6                      | 0.9                        |
| Gross Area                  | Acres                   | 18.2                     | 28                         |
| Water Surface               | Acres                   | 13.0                     | 20                         |
| Bottom Surface              | Acres                   | 10.5                     | 15.9                       |
| Maximum Water Depth         | Feet                    | 8-12                     | 8-12                       |
| Storage Volume              | Million gallons         | 35                       | 51.3                       |

Page 2-30

Table 2.4-53 shows the percolation pond disposal network capacity after the completion of the Part I project elements and Pond 8, and after the addition of a new Pond 9.

Page 2-30

**Table 2.4-53: Pond Disposal Capacities with the Addition of Pond 9**

|                             | <u>Units</u>            | <u>Ponds 5, 6, 7 and 8</u> | <u>Ponds 5, 6, 7, 8 and 9</u> |
|-----------------------------|-------------------------|----------------------------|-------------------------------|
| Disposal Capacity (Annual ) | Million gallons per day | 0.9                        | 1.25                          |
| Gross Area                  | Acres                   | 28                         | 37.8                          |
| Water Surface               | Acres                   | 20                         | 27                            |
| Bottom Surface              | Acres                   | 15.9                       | 21.3                          |
| Maximum Water Depth         | Feet                    | 8-12                       | 8-12                          |
| Storage Volume              | Million gallons         | 51.3                       | 67.3                          |

*Page 2-30*

Access to these two sites for the disposal of reclaimed water ... would provide the City with a disposal capacity of 1.30 MGD in the wet months and 1.48 in the dry months. Disposal of treated wastewater at Howard Park and Unimin Mine would further the goals of reclamation and recycling, and conserve raw water for other purposes.

*Page 2-40*

The amount of storage capacity that could be available to the City is unknown at this time, and would require negotiations with the State of California. Negotiations with the State of California regarding use of Preston Reservoir present the opportunity for further regionalization of the City's wastewater treatment facilities and could include agreements for the City to provide wastewater treatment services to Mule Creek State Prison and/or Preston Youth Facility.

### **Chapter 3: Environmental Impact Analysis**

*Page 3.1-5 (Hydrology and Water Quality)*

As shown on Figure 3.1-4 and, based on the Flood Insurance Rate Map (FIRM) for the project area, the City WWTP is not located within Zone A, the designated a 100-year flood hazard area (FEMA 2000). The COWRP is subject to flooding on portions of the site bordering Sutter Creek, which have also been designated Zone A, but most of the property lies above the 100-year inundation level. The Castle Oaks Golf Course is situated above the 100-year flood hazard area for Sutter Creek but portions of the playing area lie within the 100-year floodplain of Mule Creek (FEMA 2000). For those portions of the project site located downstream from the Five Mile Road bridge over Sutter Creek, beyond the "Limits of Detailed Study" shown on the FIRM, the extent of the delineated flood zones is approximate and can be refined based on detailed modeling at a later stage of project development.

*Page 3.1-21 (Hydrology and Water Quality)*

Iron was detected in approximately half of the samples collected from CO MW-1. The average iron concentration in this well was 1.9 mg/L (non-detects were treated as zero) with a notable spike of 13.6 mg/L on November 30, 2008 in this well. Dissolved iron, which like dissolved manganese typically forms in low-oxygen environments, was only detected once in CO MW-1 and comprised a very small proportion (only 2.4 percent) of the total iron concentration. Iron concentrations were much lower in intermediate downgradient well CO MW-2 where the average concentration was 0.66 mg/L, of which 10 to 39 percent was in the dissolved form. The highest iron levels were measured in downgradient well CO MW-3 where concentrations averaged 11.0 mg/L, with a notable spike of 48.2 mg/L on May 30, 2006. The dissolved fraction of iron at CO MW-3 averaged 48 percent. Effluent application on the golf course appears to result in low-oxygen conditions in the underlying aquifer, which is promoting dissolution of iron from the soil and/or bedrock. The primary issues regarding elevated concentrations of dissolved iron are aesthetic (taste, odor, and color), not health-related. The Title 22 secondary MCL for iron is 0.3 mg/L. Though the iron levels found in some of the monitoring wells exceeded this Title 22 standard, iron does not represent a health-related concern, and so the existing WWTP's impact on iron levels is not considered significant.

The potential impact of current disposal practices and the proposed project on concentrations of manganese and iron in groundwater is minimal because the MCL for manganese is a secondary, aesthetic drinking water MCL and groundwater quality will be improved by upgrading the treatment level to tertiary. The presence of manganese and iron in the groundwater is inherent to the geologic setting, as the lone formation oxysols underlying the disposal area (and the lone Valley) are largely composed of iron and manganese hydroxides. Further, the hydrologic analysis conclusively demonstrated that the groundwater flow path from the effluent disposal ponds to Sutter Creek is much longer than was previously assumed, as groundwater first travels south and then west before entering

Sutter Creek well downstream of the previously assumed discharge locations. The significantly longer travel times provide additional opportunities for groundwater renovation through attenuation due to precipitation of these constituents as the substrate changes from loamy clays near the secondary WWTP, to pure clays in areas to the south and west. Finally, and perhaps most importantly, any minor potential impacts on groundwater quality would be more than counterbalanced through dilution of poor quality groundwater by higher quality, tertiary-treated effluent. Thus, the impacts associated with manganese and iron degradation are less than significant.

In addition, any measures intended to reduce iron and manganese in the groundwater must be considered in light of potential linkages between denitrification of nitrate and oxidation of manganese and/or iron as effluent percolates beneath the disposal ponds, and must consider how nitrate migration might be addressed if measures to mitigate iron and manganese mobilization are implemented. The potential linkage between effluent disposal and oxidation of manganese and/or iron was suggested by Eco:logic in their 2006 ROWD report and echoed by Condor 2 years later. The mitigation measures suggested by these firms included subjecting the percolation pond bottoms to alternate wetting and drying cycles, which is practically infeasible as a much larger disposal area would be required, or increased aeration of the ponds. As stated above, the potential impact of the project on iron and manganese concentrations are not considered significance and, therefore, no discussion of potential mitigation for this issue was included in the Draft EIR. However, the hydrology analysis did consider on-site mitigation and concluded that the secondary impacts of potentially useful (i.e., feasible) measures to mitigate the problem of increased dissolved manganese and iron concentrations, such as increased aeration, would likely be much greater and much more significant than the original impact. In particular, denitrification depends on anaerobic conditions at or beneath the pond bottoms, so increased aeration would likely reduce denitrification rates and increase nitrate mobilization into the aquifer. Nitrate is a primary drinking water MCL and a much more significant health concern than either manganese or iron. As a result, measures to reduce iron and manganese concentrations have the potential to result in greater groundwater quality impacts and are not practicable.

*Page 3.1-23 (Hydrology and Water Quality)*

During times when Sutter Creek and Mule Creek are flowing, applicable beneficial uses include:

- Municipal, industrial and agricultural water supply
- Contact and non-contact aquatic recreation
- Warm and cold freshwater wildlife habitat
- Migration of aquatic organisms
- Fish spawning

*Page 3.1-24 (Hydrology and Water Quality)*

The two streams are not known to support summer rearing of anadromous fish; however, the Cosumnes is known to support these activities. The Basin Plan designates the beneficial uses of the underlying groundwater as municipal and domestic supply, agricultural supply, industrial service supply, and industrial process supply.

*Page 3.1-26 (Hydrology and Water Quality)*

**Dewatering and Other Low Threat Discharges to Land or Surface Waters**

Discharges of groundwater to land are subject to State Water Board General Water Quality Order 2003-0003. Small temporary dewatering projects are projects that discharge

groundwater to land from small construction projects, excavation projects, or dewatering of underground utility vaults. Dischargers seeking coverage under the general order must file with the Regional Board. If discharging groundwater to surface water or storm drains, a Dewatering Permit may be required. Dewatering Permits are covered under the General Order for Dewatering and Other Low Threat Discharges to Surface Waters, Order No. R5-2008-0081 (NPDES CAG995001). Discharges from construction dewatering and other specified activities may be covered by this permit provided they do not contain significant quantities of pollutants and are either (1) four months or less in duration, or (2) the average dry weather discharge does not exceed 0.25 million gallons per day (mgd).

*Page 3.1-28 (Hydrology and Water Quality)*

The City of Lone ~~draft~~ General Plan (2009) includes the following goals, policies and actions related to hydrology and water quality:

*Page 3.1-28 (Hydrology and Water Quality)*

- Policy CO-2.1: ~~Coordinate~~ Consult with relevant State and local agencies, property owners, and local interest groups to restore, enhance, and preserve creeks in and around the City of Lone. Public and private projects shall be required to avoid impacts to wetlands if feasible. If avoidance is not feasible, projects shall achieve no net loss of wetlands, consistent with State and federal regulations.

*Page 3.1-28 (Hydrology and Water Quality)*

- Action CO-4.4.4: Require the use of best management practices to protect receiving waters from the adverse effects of construction activities, sediment, and urban runoff. New development projects shall be required to incorporate the use of best management practices (BMPs) in order to protect receiving waters from the adverse effects of construction activities, sediment and urban runoff. BMPs shall be developed and incorporated in the project prior to approval by the City.

*Page 3.1-28 (Hydrology and Water Quality)*

- Action PF-3.1.2: The City shall allow the use of reclaimed water for landscape irrigation at existing parks and the Castle Oaks ~~G~~golf ~~C~~course, when permitted by state regulations. If available, the City shall use reclaimed water for landscape irrigation at all new: parks, non-residential landscaped areas, multifamily landscaped areas, and subdivisions for single-family homes. The City shall consider use of reclaimed water for landscape irrigation for non-residential landscaped areas.

*Page 3.1-30 (Hydrology and Water Quality)*

The effluent discharged into Pond 7 for disposal has been treated to secondary standards. Current regulations permit application of non-disinfected secondary effluent on pastures supporting grazing as long as the livestock are not producing milk for human consumption. The pastures adjacent to and in the direction of the groundwater flow to the south and southwest of the facility are used to graze beef cattle. The temporary release of secondary treated wastewater through lateral leaks in Pond 7 represented a less than significant impact to the extent that the leaking effluent was accidentally discharged to these fields, and subsequently evaporated or percolated to groundwater through the soil column.

*Page 3.1-46 (Hydrology and Water Quality)*

**Mitigation Measure Hydrology-6:** Following construction of Pond 8, more frequent monitoring of the wells that have already been installed may be required to demonstrate

effective removal of compounds of concern, potentially with an expanded suite of constituents. To address this need, monitoring wells near Pond 8 and east and south of Pond 7 (wells P1, MW-5A, -5B, -4A, -4, and -6) shall be monitored monthly for static water levels, and for (a) bacteria, (b) nitrate and ammonia, (c) dissolved iron and manganese, (d) redox potential, (e) specific conductance, (f) sodium, and (g) chloride. While Pond 8 is in use and for six months thereafter, water levels and specific conductance shall be monitored quarterly in offsite wells 08-1, 08-2b, 08-3, 08-4a and 08-4b to assess effects of Pond 8 on the direction of groundwater flow relative to the baseline developed in this report. If bacteria, ammonia, or nitrate-nitrogen levels in the off-site wells are found to approach or exceed the Maximum Contaminant Levels for domestic potable supply (CCR, Title 22), as a result of operation of the wastewater treatment facilities, then use of Pond 8 shall be discontinued and the treated effluent formerly percolated through Pond 8 shall be conveyed to other off-site locations or end users for disposal. Prior to discontinuing use of Pond 8 in response to excess bacteria levels, a well disinfection plan will be implemented to confirm whether elevated bacteria is attributable to the wastewater treatment facility operations.

*Page 3.1-50 (Hydrology and Water Quality)*

~~The project does not presently include construction of any above-ground impoundments or reservoirs.~~ Ponds proposed for construction or modification would be partially excavated into the ground and surrounded by low berms, as is currently the case with the existing ponds. The ground elevation at the site of proposed Pond 8 varies from 269 feet at the northeastern corner down to 264 feet at the southwestern corner. Pond 8 would be partially excavated such that it would have a flat bottom at an elevation of 262 feet. The pond would be surrounded by a levee to a height of 272 feet, and the maximum water depth within the pond would be 270 feet (i.e., 8 feet deep). The levee surrounding the new Pond 8 would be built in compliance with all industry standards and under the direction of a geotechnical engineer, so the potential impact from flooding as a result of the failure of a levee would be less than significant.

*Page 3.2-31 (Biology)*

Policy CO-2.4: Require the preservation of existing creek locations, topography, and meandering alignment. Minor adjustments to creek alignments may be approved on a case by case basis, provided the quality and integrity of the habitat are maintained.

*Page 3.2-31 (Biology)*

Policy CO-3.2: The City shall require preservation of all trees of 36 inches dbh [diameter at breast height] ~~(dbh)~~ or greater on development sites, unless health, safety, or access requirements do not allow for preservation of such trees. All development is required to fully mitigate the removal of any trees by replanting.

*Page 3.2-39 (Biology)*

Local ordinances are consistent with and do not exceed state and federal regulations protecting biological resources. The City of Lone's ~~Draft~~ General Plan (2009) contains a policy protecting native, non-invasive trees. Trees with diameters greater than 36 inches at dbh should be preserved unless their presence interferes with health, safety, or access issues for the development. Most of the project-level components are planned to occur almost entirely within previously disturbed areas, including paved areas and dedicated wastewater treatment ponds. This project description does not require the removal any trees meeting the City of Lone's size requirements or conflict with any other local policies, including tree preservation ordinances, and impacts would be less than significant.

*Page 3.3-10 (Geology, Soils and Seismicity)*

- ~~Conservation and Open Space~~ Noise and Safety

*Page 3.4-6 (Air Quality)*

- Goal CO-6: Conserve the natural resources and quality of life within the community by reducing local and global air quality impacts.

*Page 3.4-6 (Air Quality)*

- Policy CO-6.43: Promote the development and use of advanced energy technology and building materials in lone.

*Page 3.4-13 (Air Quality)*

Odors are generally not considered a nuisance unless they are detected by somebody who finds them objectionable. No formal, written complaints of odor nuisance have been received by City wastewater treatment facility staff for approximately the last five years (Guerra pers. comm. 2008). City staff and officials have received periodic odor complaints. These complaints have not been documented or verified. Prior to that Previously, the percolation ponds had experienced an algal bloom that produced an odor nuisance. The City of lone has electrical connections and aerators available to address odor issues. installed aerators in each of the ponds to generate continuous water motion and prevent the growth of algae. ~~There have been no odor issues associated with the ponds since the installation of the aerators.~~

*Page 3.4-14 (Air Quality)*

~~Odors from the current treatment system are below a level that would result in complaints from nearby residents, and the~~ The proposed project design would result in higher quality treated water with fewer odor emissions than the existing system. Impacts related to odors would be less than significant, and no mitigation measures would be required.

*Page 3.7-1 (Traffic and Transportation)*

The City of lone has prepared a Circulation Element for the City of lone ~~Draft~~ General Plan (2009). The purpose of the Circulation Element update is to provide and maintain safe and efficient systems of streets, highways, and public transportation to meet the community needs and promote land uses complimentary to the existing transportation system. In addition to forecasting future roadway conditions, the updated Circulation Element identifies potential alignments for the West lone Roadway Improvement Strategy (WIRIS), which is intended to improve traffic flow, congestion, and safety while still meeting the increasing traffic demand in around the City of lone. Large trucks, such as those typically used in construction, cause congestion in downtown lone due to the small lane widths and restricted turning radii in the downtown.

*Page 3.7-8 (Traffic and Transportation)*

Policy CIR-1.4: In addition, exceptions to Policy CIR-1.3 may be allowed by the City Council where requiring a higher LOS or allowing a lower LOS would result in clear public benefits. Specific exceptions granted by the City Council shall be added to the list of exceptions below, depicted in Figure 4.4 [of the General Plan], and updated as needed:

- Main Street, Church Street, Preston Avenue, and lone Street- LOS F; and
- All Parkways (Golf Links Drive, WIRIS Segments, F, G, H, and I)-LOS D.

*Page 3.12-8 (Public Services)*

- Policy PF-2.1: The City shall collaborate with local and regional services providers to ensure adequate and efficient provision of public facilities and services.

*Page 3.12-9 (Public Services)*

- Policy 5.3: The City shall continue to take actions necessary to meet water quality discharge standards in the operation of its wastewater treatment facilities.

*Page 3.13-2 (Greenhouse Gases)*

The City of Lone Draft General Plan (City of Lone 2009) Environmental Management Element's goals and policies relevant to air quality are listed below:

- Goal CO-6: Conserve the natural resources and quality of life within the community by reducing local and global air quality impacts.
- Policy CO-6.5: The City supports local, regional, and statewide efforts to reduce the emission of greenhouse gases linked to climate change.
- Policy CO-6.6: The City shall ~~collaborate and~~ coordinate and consult with regional organizations and local jurisdictions within the City to reduce greenhouse gas emissions.

*Page 3.14-1 (Agriculture)*

The agricultural fields ~~surrounding to the south of~~ the existing WWTP are primarily used for grazing. The area east of the existing secondary WWTP is cultivated for unirrigated fodder production. Agricultural fields to the west are used for wheat, beets, and other human consumption crops."

*Page 3.14-5 (Agriculture)*

Policy CO-10.2: The City shall not approve projects resulting in the loss of prime agricultural lands unless it makes findings that the benefits of the project outweigh the impacts associated with the loss of such agricultural lands.

## Chapter 5: Alternatives

*Page 5-5*

The greatest drawback to this alternative is the ~~feasibility~~ difficulty of obtaining the necessary National Pollutant Discharge Elimination System (NPDES) permit from the Central Valley RWQCB." The communities identified by the commenter (Jackson, Tracy, El Dorado) all have existing NPDES permits that are subject to regular renewals. The City would be proposing an entirely new stream discharge, similar to that proposed by Angel's Camp, which has been pursuing a new NPDES permit for nearly eight years. The significant length of time associated with securing a NPDES permit, combined with the requirements to meet California Toxics Rule criteria, difficulty in monitoring, and the complications of a discharge to an effluent dominated waterbody are all factors that affected the City's determination that a NPDES permit is not a desirable alternative. In addition, stream discharge would defeat the goal of pursuing recycling and reuse of treated wastewater

## Chapter 7: References

*References to the 1989 General Plan, the 1989 General Plan Land Use Element, the 2003 General Plan Circulation Element, and the 2005 General Plan Housing Element are replaced throughout Chapter 7 with the 2009 General Plan, as follows:*

### **AESTHETICS**

~~City of Ione. 2003. City of Ione General Plan Circulation Element. June 3, 2003.~~

City of Ione. 2009. City of Ione General Plan. August 25, 2009.

### **AIR QUALITY**

~~City of Ione. 2009. Public Draft City of Ione General Plan. Website:  
[http://www.ionegeneralplan.com/pdf/gp/ione\\_GPU\\_Complete\\_PDF\\_04.21.09.pdf](http://www.ionegeneralplan.com/pdf/gp/ione_GPU_Complete_PDF_04.21.09.pdf). Accessed June 18, 2009.~~

City of Ione. 2009. City of Ione General Plan. August 25, 2009.

### **BIOLOGICAL RESOURCES**

~~City of Ione. 2009. Public Draft City of Ione General Plan. Website:  
[http://www.ionegeneralplan.com/pdf/gp/ione\\_GPU\\_Complete\\_PDF\\_04.21.09.pdf](http://www.ionegeneralplan.com/pdf/gp/ione_GPU_Complete_PDF_04.21.09.pdf). Accessed June 18, 2009.~~

City of Ione. 2009. City of Ione General Plan. August 25, 2009.

### **CULTURAL RESOURCES**

~~City of Ione. 1989. General Plan and Environmental Impact Report for the City of Ione. Amended through June 1992.~~

City of Ione. 2009. City of Ione General Plan. August 25, 2009.

### **GREENHOUSE GASES**

~~City of Ione. 2009. Public Draft City of Ione General Plan. Website:  
[http://www.ionegeneralplan.com/pdf/gp/ione\\_GPU\\_Complete\\_PDF\\_04.21.09.pdf](http://www.ionegeneralplan.com/pdf/gp/ione_GPU_Complete_PDF_04.21.09.pdf). Accessed June 18, 2009.~~

City of Ione. 2009. City of Ione General Plan. August 25, 2009.

### **HAZARDS AND HAZARDOUS MATERIALS**

~~\_\_\_\_\_. 2003. City of Ione 2003 Circulation Element Final Draft. June 2003.~~

~~\_\_\_\_\_. 1989. City of Ione General Plan and Environmental Impact Report: Land Use Element. December 1989.~~

City of Ione. 2009. City of Ione General Plan. August 25, 2009.

### **HYDROLOGY AND WATER QUALITY**

~~City of Ione, 1991. General Plan and Environmental Impact Report for the City of Ione. Submitted to the City of Ione November, 1991.~~

~~City of Ione, 2003. City of Ione 2003 Circulation Element. City of Ione and Amador County Transportation Commission Report, June 3, 2003.~~

City of Ione. 2009. City of Ione General Plan. August 25, 2009.

### **LAND USE, PLANNING, AND RECREATION**

~~\_\_\_\_\_. 1989. General Plan and Environmental Impact Report. 1989~~

City of Lone. 2009. City of Lone General Plan. August 25, 2009.

**NOISE**

~~City of Lone. 1989. City of Lone General Plan and Environmental Impact Report. As amended through 1992.~~

City of Lone. 2009. City of Lone General Plan. August 25, 2009.

**POPULATION AND HOUSING**

~~City of Lone. 2005. City of Lone General Plan Final 2003-2008 Housing Element. May 17, 2005.~~

City of Lone. 2009. City of Lone General Plan. August 25, 2009.

**TRANSPORTATION AND TRAFFIC**

~~City of Lone. 1989. General Plan and Environmental Impact Report for the City of Lone. Amended through June 1992.~~

City of Lone. 2009. City of Lone General Plan. August 25, 2009.

## **3.4 Graphics Edits**

---

### **3.4.1 OVERVIEW**

This section includes edits to graphics found in the Draft EIR. The page on which the graphic is located, the figure number, a short description of the changes to the graphic, and the graphic is provided below.

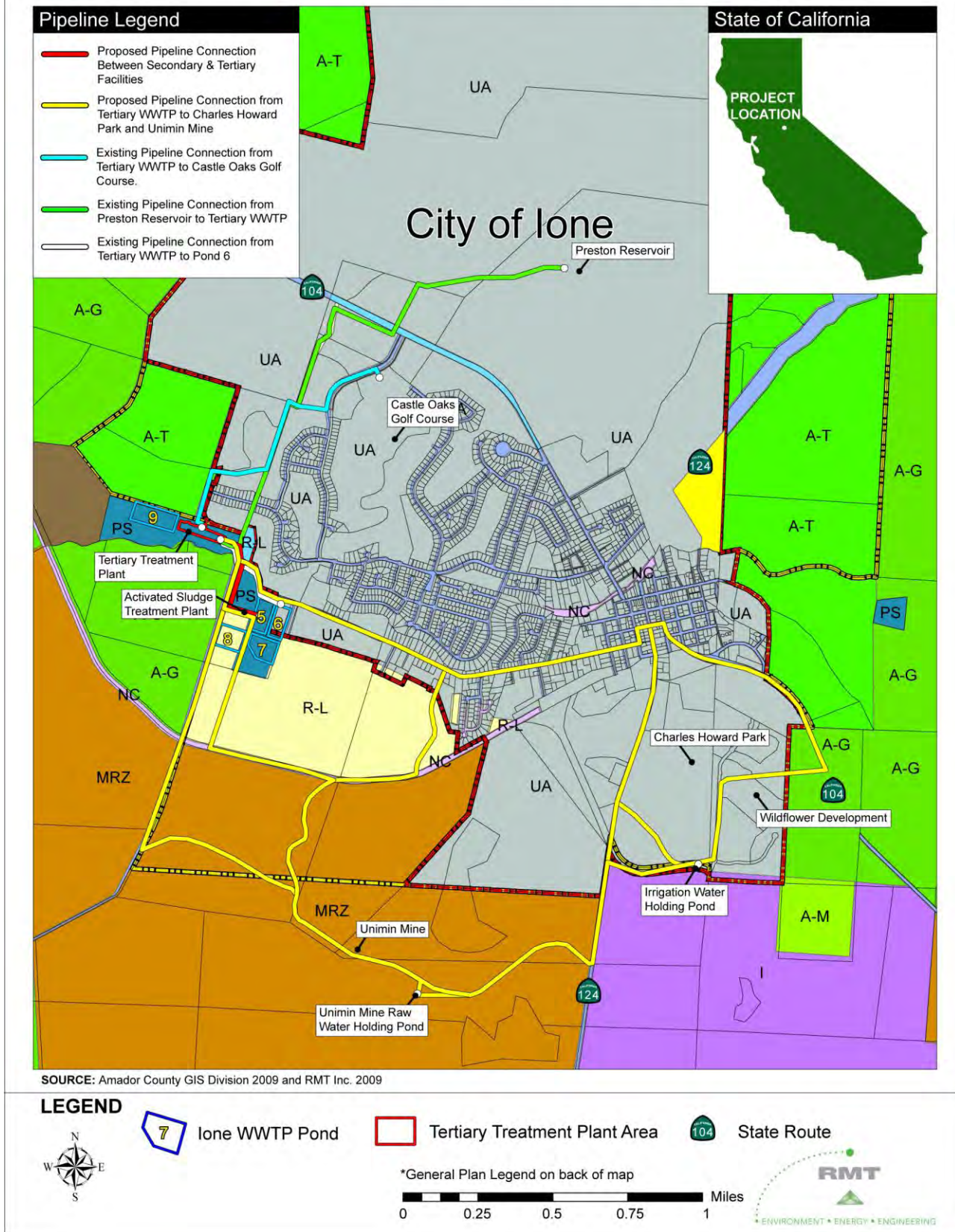
### **3.4.2 EDITS TO EXISTING FIGURES**

#### **Chapter 3: Environmental Impact Analysis**

*Page 3.6-2, Figure 3.6-1: Amador County General Plan Land Use Designations*

The following figure has been modified to accurately show the Amador County land use designations in the project area.

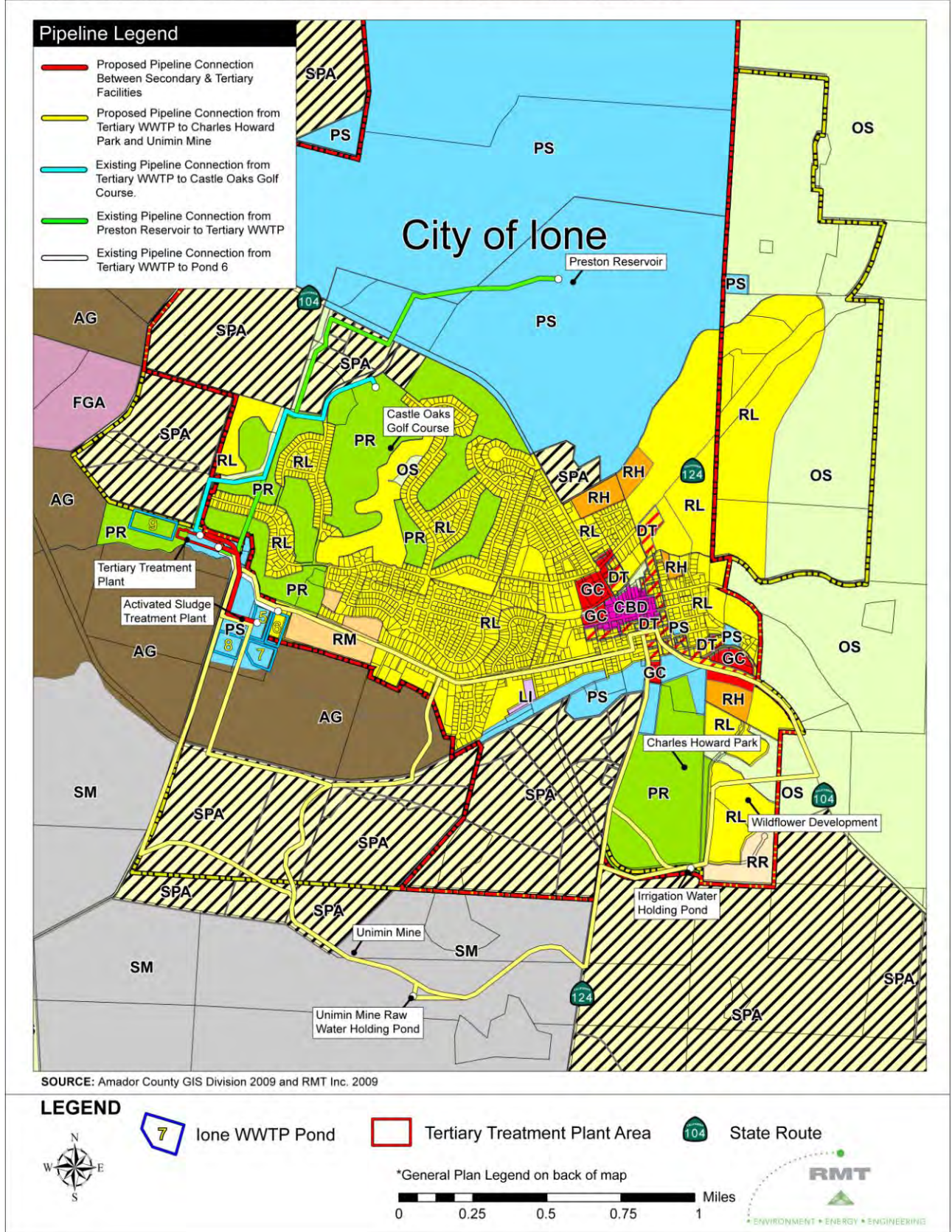
**Figure 3.6-1: County of Amador General Plan Land Use Designations - May 2009**



Page 3.6-4, Figure 3.6-2: City of Ione General Plan Land Use Designations

The following figure has been updated to reflect the changes in the 2009 General Plan Update, and has been corrected so that the word “Ciity” in the title has been replaced with “City”.

**Figure 3.6-2: City of Lone General Plan Land Use Designations - August 2009**



SOURCE: Amador County GIS Division 2009 and RMT Inc. 2009

## **3.5 Appendix Edits and Additions**

---

None

*This page is intentionally left blank*