



INTRODUCTION

Creating a successful, healthy community requires good land use planning, development of sound infrastructure systems, and the provision of public services to meet the needs of the community. This Element of the Ione General Plan addresses issues related to the public facilities serving the community. The setting and known issues related to these topics is described, and frames the goals and policies set forth to address such issues. Additional information related to the setting can be found in the General Plan Background Report, bound under a separate cover. Goals, policies and action items are identified which ensure that the planned local government services are adequate to serve the community and to meet expectations and needs of residents and businesses.

Please turn to Page 8-2 for a complete listing of contents covered in this Element, with page number references.

This Element of the General Plan addresses the following public facilities:

- Water Service;
- Sewer Service;
- Stormwater Drainage;
- Solid Waste;
- Public Schools & Libraries
- Civic Buildings;
- Electricity & Gas;
- Communications;
- Police and Fire Protection
- Cemeteries



PUBLIC FACILITIES

IN THIS SECTION

- Introduction (Page 8-1)
- Vision (Page 8-2)
- Purpose (Page 8-3)
- Related Agencies, Plans and Programs (Page 8-3)
- Relationship to Other General Plan Elements (Page 8-6)
- Setting, Issues, and Considerations (Page 8-6)
- Issues this Element Attempts to Solve (Page 8-11)
- Goals, Policies, and Actions (Page 8-11)

VISION

Ione's public facilities and infrastructure will continue to be able to adequately serve the demands of the community. Public facilities in Ione will continue to support and enhance the quality of life for residents and the ongoing success of industry and commerce. The current infrastructure and facilities should remain in excellent condition to serve all residents, workers, and visitors. In addition, long-term planning and future development activities will guide the expansion of public facilities and services.

All properties within the City will have adequate utility service, including water, sewer, drainage, solid waste, electrical and natural gas systems to support the population and protect property and the environment. The City will strive to resolve any infrastructure and facilities issues with other agencies through partnerships and collaboration. Ione will have adequate capacity for water demands, sewer treatment, and storm water drainage.

Quality education will be available to people of all ages. School and library facilities will meet the needs of a growing population. New schools will be built to serve neighborhoods and school plans will be designed with shared facilities (such as gyms, parks, and libraries) to reduce cost and optimize use. Events and activities coordinated with local and regional schools will support a cohesive social community within the City. Adults may continue life long learning and vocational training at a local community college, preferably located in Ione.

Ione will provide high quality, reliable, and quick emergency response and public safety services. Proactive efforts, such as patrols, inspections, and risk management, will reduce the number of emergencies. In addition, faster and better response will ensure that lives are saved and property is protected.

PUBLIC FACILITIES



PURPOSE

The Public Facilities Element identifies the types and levels of service necessary to support a healthy and viable community. Public services are an important part of the health and well-being of the community, as everyone depends on their provision. The goals, policies, and action items provided in this element will ensure that the City provides high levels of reliable service to its residents, workers, and visitors.

RELATED AGENCIES, PLANS AND PROGRAMS

The related agencies, plans, and programs section provides a brief summary of the other factors that may influence how the City's General Plan policies are implemented.

CITY OF IONE

Capital Improvement Program (CIP)

The City of Ione maintains a CIP that identifies multi-year capital projects and equipment purchases that will enhance the City's major facilities and operations. The CIP also includes planning schedules and identifies potential financing options.

Wastewater Master Plan

The City of Ione is pursuing a Wastewater Master Plan, which will include proposals for wastewater service provision in the City. The Master Plan will address wastewater treatment, disposal, and reuse facility needs. The Plan will include steps to meet treatment requirements, determine repair and replacement needs, and improve reliability and performance of wastewater facilities.

City of Ione Police Department

The Ione City Police Department (PD) provides law enforcement services, including traffic enforcement, patrol, and investigation. The Ione PD relies on Amador County Sheriff's Office for specialized team services. The Ione PD jurisdiction includes all areas within the City limits and it provides mutual aid to the Sheriff's office for the unincorporated area within the City's SOI, as well as a larger service area. As areas are annexed into the City, they are served by the Ione PD.

City of Ione Fire Department

The City of Ione Fire Department (FD) provides fire prevention, fire protection, fire suppression, basic life support (BLS), low-angle rescue, and water rescue services. For calls involving emergency medical services, FD provides BLS response until American Legion Ambulance Service arrives to perform advanced life support and ambulance transport. The FD provides services to all areas within the city limits, including both of the prisons and the state fire academy (all are located within the city limits), plus a primary response area defined through an automatic aid agreement with Amador Fire Protection District. Emergency calls for the entire County are received by the Amador



PUBLIC FACILITIES

County Sheriff's Office, which transfers calls to the fire dispatch center at CAL FIRE in Camino. The FD is then dispatched for all calls within its primary response area.

The FD has a Master Plan with set goals and objectives to outline its future. The Master Plan lists out specific time frames for implementing certain tasks, based on an immediate, short, medium, and long range plans spanning up to 20 years. Typical goals include specifying equipment needs, staffing goals, improving fire protection coverage, infrastructure upgrades, and new facilities.

AMADOR COUNTY & REGION

Local Agency Formation Commission (LAFCo) of Amador County

LAFCos are State-mandated quasi-judicial countywide commissions. They oversee boundary changes of cities and special districts, the formation of new agencies, and the consolidation or reorganization of special districts and cities. Amador LAFCo will consider any subsequent changes to the City's Sphere of Influence boundary, annexation requests, or changes to service districts or boundaries affecting the City.

Amador County Sheriff's Office

The Amador County Sheriff's Office (ACSO) provides patrol, investigation and dispatch services. The Sheriff's Office serves areas outside of the city, and is also responsible for responding to law enforcement calls and provides patrol and investigative services in unincorporated Amador County. ACSO also provides emergency 911, law enforcement, and ambulance dispatch services throughout Amador County, and operates the Amador County Jail.

Amador County Unified School District (ACUSD)

The City of Ione is served by the Amador County Unified School District (ACUSD). ACUSD operates two public schools, Ione Elementary and Ione Junior High, within the City limits.

Amador Water Agency

Water service to Ione is provided by the Amador Water Agency (AWA). The City gets its water from the Tanner Reservoir, transported via the Ione Pipeline, to the Ione Water Treatment Plant, where the water is treated and distributed to residents.

Amador Water Agency Urban Water Management Plan

The Urban Water Management Plan (UWMP) is utilized by the AWA for the management of the Agency's water supplies and water demands covering a range of normal and drought conditions. The UWMP provides information and protections regarding water supply availability and future water demands for AWA's service areas.

PUBLIC FACILITIES



Amador County Solid Waste Management Regional Agency

The Regional Agency is composed of representatives from each jurisdiction in Amador County and manages the solid waste contracts. Solid waste services are contracted out to private service providers.

Pacific Gas and Electric Company

Pacific Gas and Electric Company (PG&E) is the only electrical and natural gas service provider in the area and has the facilities to transmit and distribute electricity and natural gas.

AT&T

AT&T is the only local wired telephone service provider in the area and has the facilities to provide telephone service.

Volcano Communication

Volcano Communications is the only cable television service provider in the area and has the facilities to provide cable television service.

STATE OF CALIFORNIA

California Integrated Waste Management Act

The California Integrated Waste Management Act (CIWMA) requires each city and county to prepare, adopt, and submit to the California Integrated Waste Management Board a source reduction and recycling element (SRRE) that demonstrates how the jurisdiction will meet the mandated diversion goals.

California Highway Patrol

The California Highway Patrol (CHP) provides law enforcement and patrol services throughout Amador County on state highways, freeways, and unincorporated roadways. The CHP has primary jurisdiction on roads used for hazardous materials transport. In addition, cell phone emergency (911) calls are automatically routed to the CHP.

CAL FIRE

The California Department of Forestry and Fire Protection (CAL FIRE) is responsible for responding to wildland fires in the area around the City of Ione. In addition, CAL FIRE provides mutual aid assistance to the Ione Fire Department.



PUBLIC FACILITIES

Mule Creek State Prison Fire Department

The Mule Creek State Prison Fire Department is responsible for protecting property belonging to the California Department of Corrections, including the Preston School (California Youth Authority). The Mule Creek State Prison Fire Department also provides response within the City's primary response area when specifically requested.

RELATIONSHIP TO OTHER GENERAL PLAN ELEMENTS

This Element is closely related to the Land Use, Conservation, Noise and Safety and Circulation Elements. Public utility infrastructure must support the varied land uses and often shares the same rights-of-way with circulation routes. The Land Use Element specifies locations for major public facilities such as schools, water treatment plants, and government buildings. The Noise and Safety Element ensures public facilities are adequately protected from hazardous conditions. The Conservation Element deals with water conservation, recycling and quality, which relate to overall water provision issues addressed in this Element. The Conservation Element addresses public parks and recreation opportunities which may share facilities with the agencies identified in this element. In addition, the Conservation Element addresses historic and cultural resources..

SETTING, ISSUES, AND CONSIDERATIONS

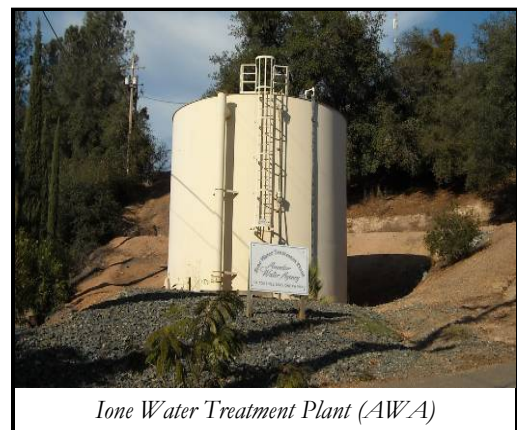
The Issues and Considerations section briefly describes the issues determined to be of most importance to the City Council and residents. These issue topics were gathered through extensive community outreach and comments from both the public, elected leaders, and City staff. These issues and considerations provide background information and further provide a framework to create and interpret the General Plan policies.

For the reader's reference, **Figure 8-1** shows the location of the public facilities discussed in this element.

WATER PROVISION

Residents desire a safe and reliable municipal water supply for drinking and for fire protection. The Amador Water Agency (AWA) provides wholesale, retail, raw, and treated domestic water to most of Amador County's residences and businesses, including those within Ione. The water system for Ione serves the residents of the City plus other areas in the unincorporated western portion of the County.

The limiting factor in AWA's water provision to residents in the County is the available water treatment capacity. As the City grows, there will be a need for increased water treatment capacity serving Ione.

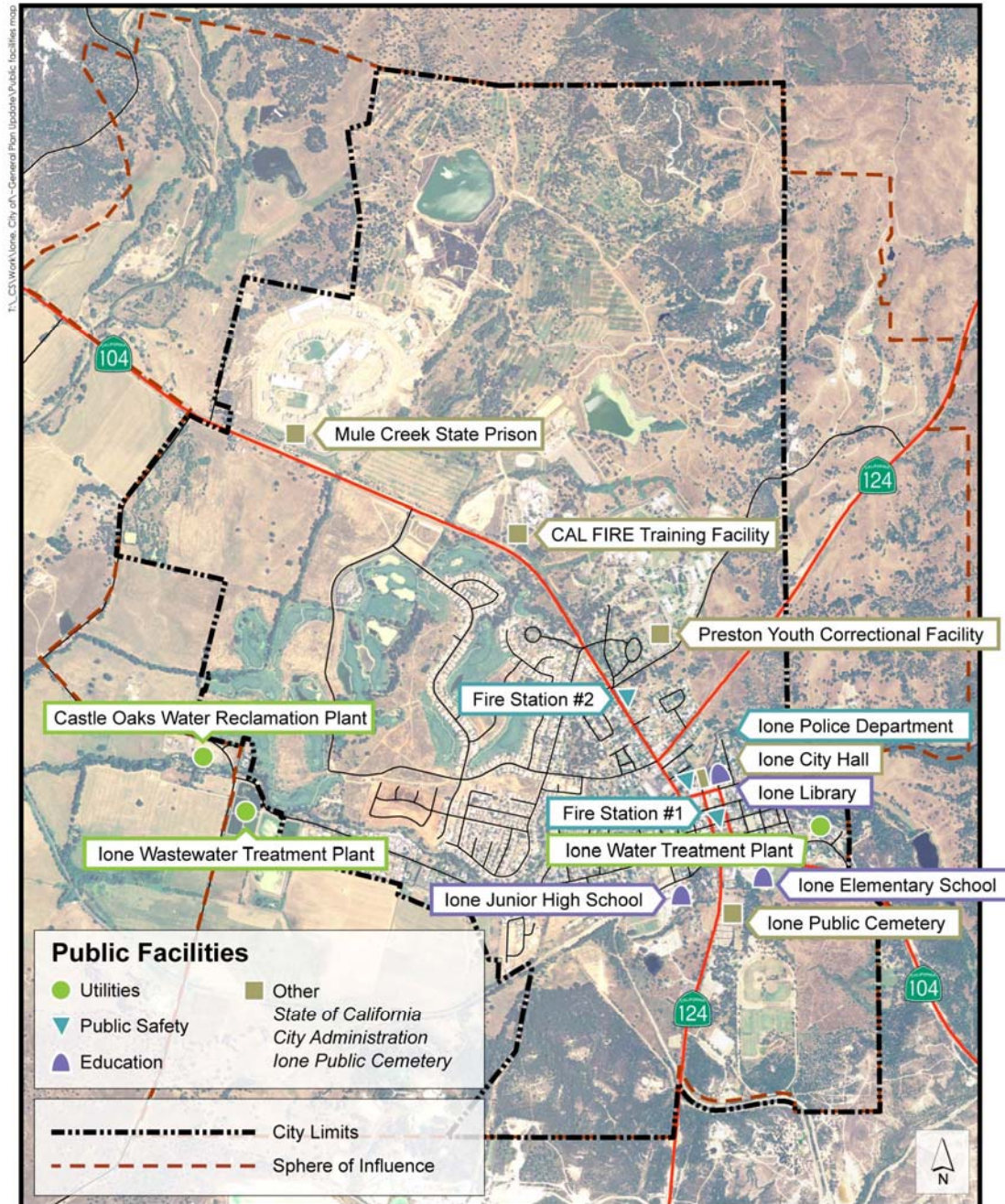


Ione Water Treatment Plant (AWA)

PUBLIC FACILITIES



FIGURE 8-1: PUBLIC FACILITIES



Public Facilities



City of Ione
Planning Department

Note: Facility locations area approximate.



PUBLIC FACILITIES

In addition to potable water service, AWA provides non-potable raw water service to Howard Park, Preston Youth Correctional Facility, and Unimin mines, of which only the Unimin property is located outside of the City limits. AWA does not provide agricultural irrigation, as existing agricultural uses in much of the Ione Valley rely on groundwater.

WASTEWATER TREATMENT

The City of Ione provides wastewater treatment services to the City and limited wastewater treatment services to the Amador Regional Sanitation Authority (ARSA). The City operates two wastewater treatment and disposal facilities: the City of Ione Wastewater Treatment Plant (WWTP), otherwise known as the secondary treatment plant, and the Castle Oaks Water Reclamation Plant (COWRP), otherwise known as the tertiary treatment plant. The WWTP was designed to treat the wastewater received from the City to a secondary level for disposal, while the COWRP treats wastewater from ARSA to a tertiary level to be disposed of as irrigation for the Castle Oaks golf course.

Due to long term demand expectations and desire for high quality service, the City is pursuing a Wastewater Master Plan to increase its wastewater treatment capacity and level of treatment. The ultimate goal for the City is to treat all wastewater to a tertiary level and use the reclaimed water for irrigation, mining, and other appropriate uses in and around Ione.

STORMWATER DRAINAGE

Generally, the older sections of Ione have an inadequate storm drainage system. Many older streets and development lack storm drainage facilities or only have limited storm drainage facilities, such as open air drainage. In some areas of the City, no storm drainage facilities exist, requiring City staff to place temporary storm drainage structures to contain runoff. The City intends to correct existing deficiencies in the stormwater drainage system.



Open drainage system with no paved sidewalk

SOLID WASTE

The City is a member of the Amador County Solid Waste Management Regional Agency and receives a permit from them to handle solid waste services with private haulers.

PUBLIC SCHOOLS

Residents have expressed a great desire for high quality local education. Many residents have directly expressed their desires for a high school to be located in Ione, as well as a community college.

The City of Ione is served by the Amador County Unified School District (ACUSD). ACUSD operates two public schools, Ione Elementary and Ione Junior High, within the City limits. Ione's

PUBLIC FACILITIES



students are bussed to Argonaut High School in Sutter Creek to attend high school. Future growth of the City will increase the student population, and is likely to require the construction of new schools, and possibly a high school. Any new schools would need to be coordinated between the school district or community college district, the City, and other public service providers.

LIBRARY

Amador County operates the library system within the County. The County has a local library branch within downtown Ione, the Ione Library, located at 25 East Main Street. A 2005 needs assessment of the library system determined that a new library facility was needed elsewhere in the County, and that existing libraries needed to upgrade their computer technology.

CITY HALL

City Hall serves as the administrative center for the City, housing all of the City's administrative functions and offices, including the City Council Chambers. City Hall also houses the Ione Police Department. The Ione Police Department is looking to relocate to a new facility due to space constraints at City Hall. Any future expansion and growth of the City is likely to also require additional staff and office space at City Hall. Potential administrative office expansion could be provided if and when the Police Department has a new facility and vacates their space at City Hall.



Police vehicle in front of City Hall

CEMETERY

The Ione Public Cemetery is the only public cemetery located in the City and is operated by the Township Number Two Public Cemetery District. The District estimates that their cemeteries have a combined capacity enough to provide burials through the period of this General Plan. Additional private cemeteries are also located in the City, and provide options for residents of the community.

LAW ENFORCEMENT FACILITIES

The Ione Police Department operates out of limited space within City Hall. As the City grows and more police officers are added, the Police Department will require additional office space. Future growth consideration will need to include the Department's future space requirements.



Near completion of Fire Station #2 in late 2008



PUBLIC FACILITIES

FIRE PROTECTION AND EMERGENCY MEDICAL FACILITIES

The City of Ione relies on paid-call firefighters. In addition to serving the City, Ione's firefighters operate in a service area of approximately 38 square miles outside its boundaries.

The Ione Fire Department operates from two fire stations, one located on W. Jackson Street (Station 1) in the downtown, and another located on Preston Avenue (Station 2) north of Sutter Creek just south of Waterman Road. Operations and management of the Fire Department are based out of Station 2. In the event of flooding or when the bridge over Sutter Creek is impassable, emergency response to either side of the creek is limited.

Emergency medical aid service is provided by the Ione Fire Department as a first responder. Ambulance services are provided by the American Legion Ambulance Service, a non-profit organization.

STATE FACILITIES

Mule Creek State Prison

The Mule Creek State Prison (MCSP) is a prison housing adult male inmates. The prison is located in the northern portion of the City and is controlled and operated by the State.

MCSP operates its own wastewater treatment facility but also treats wastewater from the Preston Youth Correctional Facility and the CAL FIRE Academy training facility. The MCSP wastewater facility is capacity constrained and unable to treat additional flows without expansion. Potential recommendations include connecting CAL FIRE's training facility to the City's wastewater system, allowing for expansion of the CAL FIRE facility.

Preston Youth Correctional Facility

The Preston Youth Correctional Facility is a juvenile correctional facility housing male wards. The facility is located at 201 Waterman Road, just north of downtown. The facility is controlled and operated by the State. Residents in Ione have made frequent suggestions for the City to consider reuse of the facility as a potential community college site in the event the correctional facility is closed.

CAL FIRE Academy

The CAL FIRE Academy, located at 4501 Preston Road, provides training in fire protection, fire prevention, law enforcement, administration, resource management, and fire crew management. The facility is controlled and operated by the State.



CAL FIRE entrance

PUBLIC FACILITIES



ISSUES THIS ELEMENT ATTEMPTS TO SOLVE

This Element provides goals, policies, and actions that address the following issues, many of which were raised at public meetings during creation of the General Plan:

- Designing and providing local services to meet the needs of local residents.
- Provision and maintenance of adequate public facilities to support anticipated growth in resident and workforce populations.
- Managing new development areas to ensure that roads, water lines, electrical facilities, storm drainage facilities, and sewer systems are constructed in advance of residential development.
- Coordinating with water, sewer, and utility service providers to reduce incidences of service interruption, improve the quality and sustainability of services, and reduce per-unit costs.
- Ensuring a clean water supply and adequate water and sewer capacity.
- Developing and maintaining storm drainage facilities to prevent drainage issues when possible.
- Creating public schools that are at the forefront of educational efforts, seen as a viable option by all parents, and are safe for children.
- Ensuring that public facilities provide healthy and safe conditions and promote well-being for all residents, workers, and visitors of Ione.
- Minimizing visual impacts and physical impediments of utilities.

GOALS, POLICIES, AND ACTIONS

GOAL PF-1: **Ensure the development of public infrastructure that meets the long-term needs of the community and ensure infrastructure is available at the time such facilities are needed.**

Policy PF-1.1: Require sufficient capacity in all public facilities to maintain desired service levels and avoid capacity shortages or other negative effects on safety and quality of life. (*Cross reference: ED 3.1.4*)

Action PF-1.1.1: The City shall adopt a phasing plan for the development of public facilities in a logical manner that encourages the orderly development of roadways, drainage, sewer, and other public facilities. (*Cross reference: LU 1.3*)



PUBLIC FACILITIES

Policy PF-1.2: Ensure adequate funding for public facilities maintenance, capital improvement projects, and redevelopment efforts. (*Cross reference: LU 1.3*)

Action PF-1.2.1: Ensure new development pays for long-term maintenance costs associated with infrastructure needed to support such development, such as through development impact fees and establishment of a financing district or mechanism. If financing districts are to be established, they shall be done concurrently with Final Map recordation.

Policy PF-1.3: The City shall require new development to provide adequate facilities and services or pay its fair share of the cost for facilities needed to provide services to accommodate growth, except for special circumstances when the City grants an impact fee reduction or waiver, such as to promote low-income housing programs or infill development projects. (*Cross reference: H 4.5.1, H 5.5.1, H 5.6.1, NS 7.2, NS 7.3*)

Action PF-1.3.1: During the development review process, the City shall not approve new development unless the following conditions are met:

- The applicant can demonstrate that all necessary infrastructure will be installed or adequately financed;
- Proposed infrastructure improvements are consistent with City infrastructure plans; and
- Proposed infrastructure improvements incorporate all feasible measures to maintain or increase public safety and/or reduce environmental impacts associated with the construction, operation, or maintenance of any required improvement.

Action PF-1.3.2: The City's Development Impact Fee Schedule shall either be updated at least every five years or tied to the Consumer Price Index (CPI) to account for increasing costs for facilities and services.

Policy PF-1.4: The City shall not allow construction in phased projects, within all areas of the City, including newly annexed areas, until backbone infrastructure is completed that will provide for all phases of the development. Backbone infrastructure is defined as public services and facilities, such as collector and arterial roadways, including lighting, signage, landscaping, bikeways, and other public services and facilities for such roads. (*Cross reference: LU 1.4.1, CIR 1.1*)

Policy PF-1.5: Street lighting on City roadways shall be limited to the minimum amount needed for public safety and shall be designed to focus light where it is needed (e.g., intersections). Streetlights shall consist of fixtures that are designed to block

PUBLIC FACILITIES



illumination of adjoining properties and prohibit light rays emitted from the fixture at angles above the horizontal plane.

Action PF-1.5.1: As part of the development review process, the City shall require that all nighttime lighting associated with new development be designed to limit upward and sideways spillover of light.

Action PF-1.5.2: As part of the development review process, the City shall restrict the use of reflective building materials that could cause glare.

GOAL PF-2: Promote efficiency, agency collaboration, and community design in the provision, location, and operation of public facilities and services.

- Policy PF-2.1: The City shall collaborate with local and regional service providers to ensure adequate and efficient provision of public facilities and services.
- Policy PF-2.2: Encourage coordination with public service providers, including schools, regional parks and recreation, utility, transit, and other service districts in developing service planning strategies. (*Cross reference: CO 8.1.2*)
- Policy PF-2.3: Public facilities and services shall be equitably distributed throughout the community to enhance quality of life.
- Policy PF-2.4: The City shall work with ACTC and other partners to address vulnerability of the city's infrastructure and appropriate adaptation strategies to protect those resources that are likely to be impacted by adverse effects associated with global climate change.

GOAL PF-3: Promote the efficient use of limited water resources.

- Policy PF-3.1: Increase efficiencies in water use, wastewater generation and the handling of storm water runoff through best practices in sustainable water management.

Action PF-3.1.1: The City shall implement a water conservation program to reduce future water demand by establishing requirements for new construction that encourage conservation.

Action PF-3.1.2: The City shall allow the use of reclaimed water for landscape irrigation at existing parks and the Castle Oaks golf course, when permitted by state regulations. If available, the City shall use reclaimed water for landscape



PUBLIC FACILITIES

irrigation at all new: parks, non-residential landscaped areas, multifamily landscaped areas, and subdivisions for single-family homes. The City shall consider use of reclaimed water for landscape irrigation for non-residential landscaped areas. (*Cross reference: CO 4.2*)

Action PF-3.1.3: The City shall work with property owners, farmers, mining companies, and other public agencies to assess the feasibility of providing reclaimed water to lands around the City, when permitted by state regulations. This shall include agricultural operations, existing mining sites, former mine sites, and to other public water agencies. Expansions of the wastewater treatment facilities and infrastructure shall be consistent with RWQCB requirements.

Action PF-3.1.4: Ensure that drainage facilities in new development incorporate stormwater runoff and sediment control, using sustainable water management and Best Management Practices, as published by the Regional Water Quality Control Board (RWQCB), where appropriate. (*Cross reference: CO 2.2, CO 4.4, NS 3.4.1*)

Action PF-3.1.5: Where possible, require drainage facilities to use natural channels that simulate natural drainage ways while protecting property. (*Cross reference: CO 2.2, CO 4.4.3, NS 3.4.1*)

Policy PF-3.2: The City shall encourage the use of reclaimed water in toilets and for residential and municipal uses as technologies and legal mechanisms allow.

GOAL PF-4: Ensure adequate, efficient, and reliable water service to meet the needs of existing and future development.

Policy PF-4.1: The City shall work collaboratively with Amador Water Agency to ensure efficient delivery of potable water and address water capacity issues in Ione.

Action PF-4.1.1: The City shall consult with AWA by providing growth forecast information to ensure adequate supply needed to accommodate anticipated growth. (*Cross reference H 2.2.4*)

Action PF-4.1.2: The City shall work with AWA to facilitate the construction, expansion, and/or rehabilitation of water treatment facilities in Ione.

Action PF-4.1.3: The City shall consult with state agencies and AWA to integrate surrounding land uses into the water service network as appropriate. The City shall work with AWA to consider expanding potable water service to areas outside of the city boundary for those lands concurrently being considered for annexation into the city. This action shall not be interpreted to limit AWA and the

PUBLIC FACILITIES



City's desires to provide and expand non-potable, including recycled water service to properties near Ione.

Action PF-4.1.4: The City shall work with AWA to protect the quality and quantity of groundwater resources and establish groundwater management planning. (*Cross reference: CO 4.1.2*)

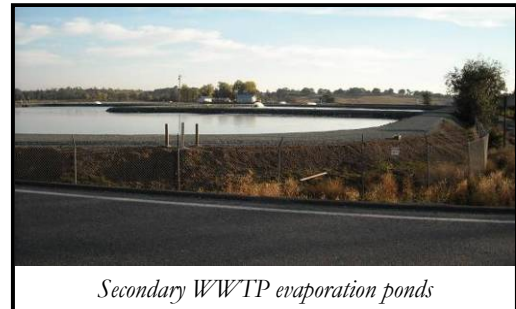
Policy PF-4.2: The City shall proactively work with AWA to ensure sufficient water supply for affordable housing projects, consistent with State law requirements.

Policy PF-4.3: The City shall require that water flow and pressure be provided at sufficient levels to meet domestic, commercial, industrial, and firefighting needs. At a minimum, the water distribution system shall meet all pressure requirements outlined in the California Department of Public Health/Waterworks Standards.

GOAL PF-5: Provide adequate wastewater treatment capacity to accommodate the needs of existing and future development.

Policy PF-5.1: The City will maintain sufficient sewer capacity to accommodate future development that has been entitled or could be entitled under the land use patterns adopted in this General Plan.

Action PF-5.1.1: The City will seek out public/private partnerships and design build options to upgrade, combine, and/or expand sewer treatment facilities as needed to provide sufficient sewer capacity.



Secondary WWTP evaporation ponds

Action PF-5.1.2: As part of the Wastewater Master Plan, the City will establish a phasing plan to address planning, timing, and construction of new treatment facilities and expansion of existing facilities as new development occurs so no one development or home triggers the need for expanded services and adequate “buffer” capacity is available.

Policy PF-5.2: The City requires all improved properties to be served by municipal sewer service. Independent community sewer systems may not be established for new development unless such systems meet all City standards. (*Cross reference H 2.2.3*)

Policy PF-5.3: The City shall continue to take actions necessary to meet water quality discharge standards in the operation of its wastewater treatment facilities.



PUBLIC FACILITIES

- Policy PF-5.4: The City shall ensure sufficient wastewater treatment capacity for affordable housing projects, consistent with State law requirements, by reserving a portion of future wastewater treatment commitments sufficient for the next seven years of affordable housing required.
- Policy PF-5.5: The City shall consider the use of best available control technology appropriate to dispose of treated effluent based upon factors of reliability, economic feasibility, and the ability to meet discharge permit requirements.

GOAL PF-6: Ensure adequate stormwater drainage facilities to meet the needs of existing and future development.

- Policy PF-6.1: New development within the City shall not increase peak off-site storm drainage flow.

Action PF-6.1.1: City shall update the Storm Water Master Plan to assess the need for stormwater drainage system improvements and set up a system for monitoring storm drain requirements. (*Cross reference: NS 3.2.1*)

Action PF-6.1.2: The City shall require appropriate runoff control measures as part of future development proposals to slow runoff, maximize on-site infiltration, and minimize discharge or urban pollutants into area drainages.

Action PF-6.1.3: The City shall encourage project designs that minimize drainage concentrations and impervious coverage.

Action PF-6.1.4: Where feasible, the City shall consider multiple public uses for stormwater facilities as part of future development proposals, including the potential for passive recreation, landscaped area, and open space.

Action PF-6.1.5: The City will establish Low Impact Development (LID) standards through either the Stormwater Master Plan or the Municipal Code.

GOAL PF-7: Ensure that the City's solid waste disposal needs are met while maximizing opportunities for waste reduction and recycling.

- Policy PF-7.1: The City shall work with Amador County, the Regional Agency, and the solid waste contractors to promote solid waste reduction, recycling, and composting of wastes to minimize residential, commercial, and industrial waste disposal. (*Cross reference: CO 7.1*)

PUBLIC FACILITIES



Action PF-7.1.1: The City shall encourage the recycling of construction debris.

Action PF-7.1.2: The City shall encourage businesses to take a more active role in recycling and composting, focusing on businesses that generate a large amount of compostable or recyclable waste.

Policy PF-7.2: The City shall work with the Amador County Solid Waste Regional Agency to enter into franchise agreements for solid waste collection and disposal, consistent with state law.

Action PF-7.2.1: The City shall establish regulations in Franchise Agreements for solid waste collection and disposal, as well in municipal operations and programs, to meet the waste diversion requirements of the Integrated Waste Management Act of 1989 (SB 939).

GOAL PF-8: Ensure the highest possible level of education to students in Ione including re-establishing a high school in the community.

Policy PF-8.1: Work closely with the Amador County Unified School District to identify needs for public education programs, including developing and expanding extra-curricular recreation and educational programs for primary and secondary education where feasible.

Policy PF-8.2: Assist the school district in identifying and acquiring school site(s) as a part of new development.

Policy PF-8.3: The City shall include the following criteria in assisting the ACUSD in school site selection and provision of utilities: (*Cross reference: CIR 2.3, CIR 2.8.1, CO 8.1.2*)



Ione Elementary School

- Traffic impacts on nearby roadways and effect on City standards for Level of Service.
- Interrelatedness of school sites with churches, parks, greenways, and off-street paths.
- Walking distance to the greatest number of students.
- Safe walking routes to and from school.



PUBLIC FACILITIES

- Joint use potential of new school sites with existing and planned community recreation and parks programs and facilities.
- Linkages with trails, bikeways, and pedestrian paths.

Policy PF-8.4: Work with the Amador County Unified School District to facilitate the construction of a high school within Ione.

GOAL PF-9: Provide opportunities for higher education in the City of Ione that support professional development and workforce training.

Policy PF-9.1: Work with the regional community college districts, vocational, and technical colleges, to facilitate the location of a community college within Ione.

Action PF-9.1.1: Evaluate the potential reuse of the Preston Youth facility site and identify other locations as a potential community college, in the event that the State of California decides to close the facility.

GOAL PF-10: Ensure that adequate library services and facilities are provided to the City's residents.

Policy PF-10.1: Encourage the expansion of adequate library facilities and programs to meet the needs of Ione residents as the community grows.

Action PF-10.1.1: Consult with Amador County to plan for a new or expanded library facilities in Ione, as needed based on future growth.

Action PF-10.1.2: Consult with Amador County to continue to provide funding for library programs and activities such as children's story time, the Ione Book Club, and providing state-of-the-art information and communication services.

GOAL PF-11: Ensure that adequate electricity and gas services are provided to the City's residents and businesses.

Policy PF-11.1: The City shall consult with Pacific Gas and Electric Company for the planning and extension of gas and electrical facilities. (*Cross reference: LU 2.4.4*)

PUBLIC FACILITIES



- Policy PF-11.2: The City shall require undergrounding of utility lines in new commercial development and in new residential development consisting of three or more structures, except where infeasible due to the electrical transmission load or other operational issues, as confirmed by the utility provider.
- Policy PF-11.3: The City shall encourage, support, and evaluate the provision of proven, cost-effective, and feasible alternate forms of energy, including solar and wind power in Ione. (*Cross reference: CO 6.3*)

GOAL PF-12: Ensure that adequate access to telecommunication services is available to all residents and businesses in Ione.

- Policy PF-12.1: The City shall work with telecommunication providers to ensure all residents and businesses have access to telecommunications services, including new technologies. To maximize access to inexpensive telecommunications services, the City shall encourage marketplace competition from multiple major service providers.
- Policy PF-12.2: Where allowable under State law, the City shall encourage the siting of telecommunications infrastructure using the following guidance:
- Create an efficient service network through co-location of cellular facilities;
 - Locate in areas that minimize visibility from public rights of way and residential areas;
 - Locate facilities on existing buildings, poles, or other support structures; and,
 - Facilities should be painted, camouflaged, textured, or otherwise designed to better integrate into existing conditions adjacent to the installation site and to minimize visual impacts.
- Policy PF-12.3: All new major commercial, office, and business developments and redevelopment projects shall ensure that adequate high speed telecommunication is available in the building.



PUBLIC FACILITIES

GOAL PF-13: **Maintain sufficient levels of fire protection and police services to protect public safety and property.**

Policy PF-13.1: The City shall strive to maintain a firefighting capability sufficient to maintain a proper fire response time as a general guideline for service provision and locating new fire stations. (*Cross reference: NS 7.1*)

Action PF-13.1.1: Assess the City's needs by updating the Fire Department Master Plan at least every five years.

Action PF-13.1.2: Establish a minimum fire staffing ratio per 1,000 residents.

Action PF-13.1.3: Establish a threshold based on population growth for when a transition from "paid call" to full-time fire protection service is necessary. The threshold may include a mix of "paid call" and full-time firefighters.

Policy PF-13.2: The City shall require all new developments to provide adequate emergency access features, including secondary access points, as determined by the Ione Fire Department. (*Cross reference: NS 7.1.1*)

Policy PF-13.3: Ensure that the Police Department has sufficient space and facilities to support law enforcement needs.

Action PF-13.3.1: Establish and maintain funding mechanisms for planned additional space needs of the Police Department.

Action PF-13.3.2: Require new development to provide adequate fair-share funding for the design, construction, and operation of a new Police facility and for officers through a funding mechanism such as an assessment district, community facilities district, or other similar program. If financing districts are to be established, they shall be done concurrently with Final Map recordation.



Policy PF-13.4: The City shall promote the use of volunteer and educational programs to assist police personnel.

PUBLIC FACILITIES



Policy PF-13.5: The City shall strive to maintain a law enforcement capability sufficient to maintain a safe community and proper response time as a general guideline for service provision.

Action PF-13.5.1: Establish a minimum police response time as a standard.

Action PF-13.5.2: By 2015, compile a Police Department Master Plan to formally assess the needs of the Police Department and to estimate and plan for future service demands.